

WE SHAPE  
AIR



**BETA**  
industrial  
PRODUCTS CATALOGUE

PRODUCT BULLETIN

12



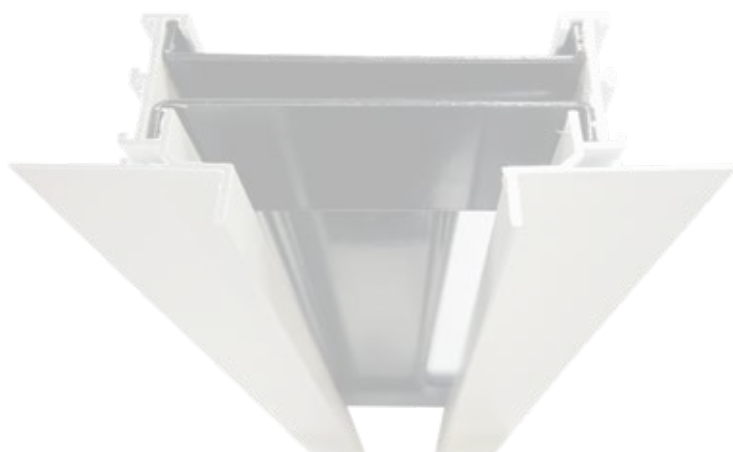




**BETA**  
i n d u s t r i a l

# index

>>	<b>FLOW BAR DIFFUSERS</b>	<b>1</b>
>>	<b>PERFORMANCE DATA</b>	<b>4</b>





High Throw Flow Bar Diffuser - FBR/FBF

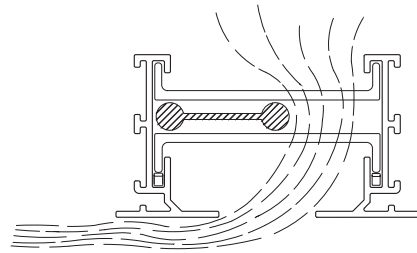
- Continuous slot system which allows the air distribution to become inconspicuous, while fully integrating and complementing the ceiling system and other ceiling components.
- Ceiling installation with unique clip and hanger support systems.
- Heavy extruded aluminium profile.
- Standard slot sizes are 50 & 38 ,25mm. Section lengths up to 12 feet are standard to minimize joints in long run.
- Integral pattern controllers allowing the airstream to be directed left and right for horizontal and vertical airflow. The format and colours of the table to be like below.
- Allows supply, return and exhaust air all from one diffuser, reducing ceiling clutter.



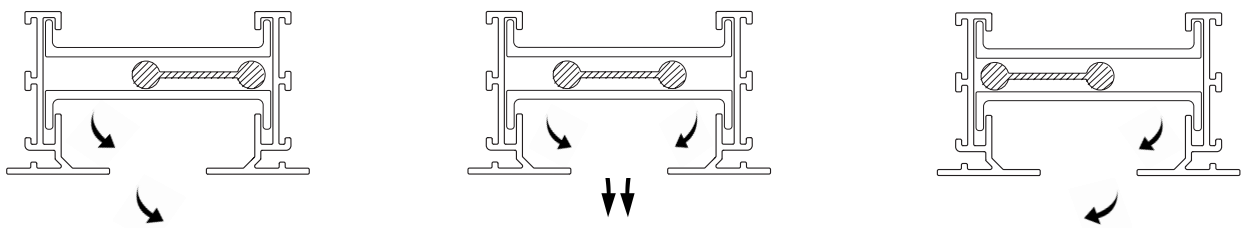
Models

- FBR/FBF 25mm Slot
- FBR/FBF 38mm Slot
- FBR/FBF 50mm Slot

Section Details



Air Pattern

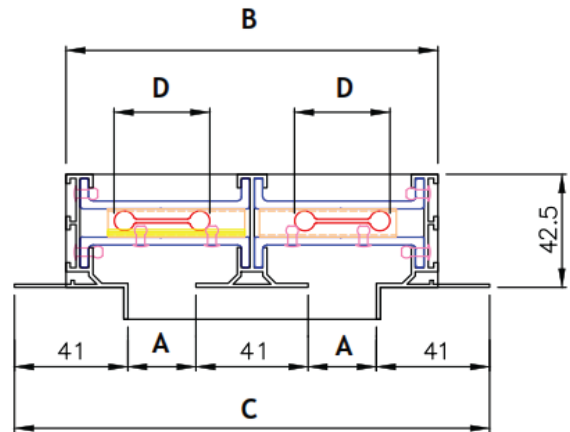
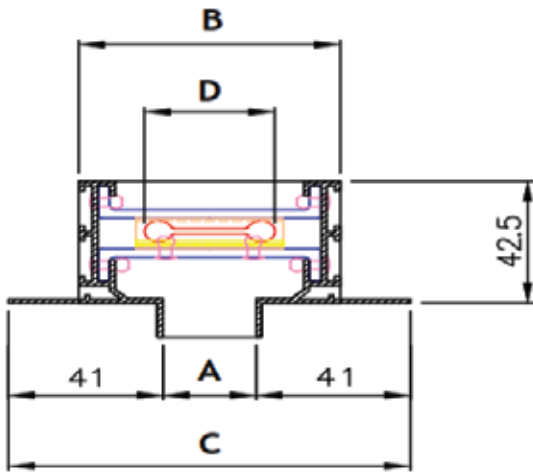




A) FLOW BAR DIFFUSER (FBR - Recessed Type Flow Bar Diffuser)

Number Of Slots	1			2		
	Slot Width, mm (A)	25	38	50	25	38
Neck Dimension, mm (B)	70	82	95	136	160	185
Face Dimension, mm (C)	108	121	133	172	198	222
Air Controller Bar (D)	35	35	54	35	35	54

\* Above dimension with  $\pm 2$  mm tolerance.

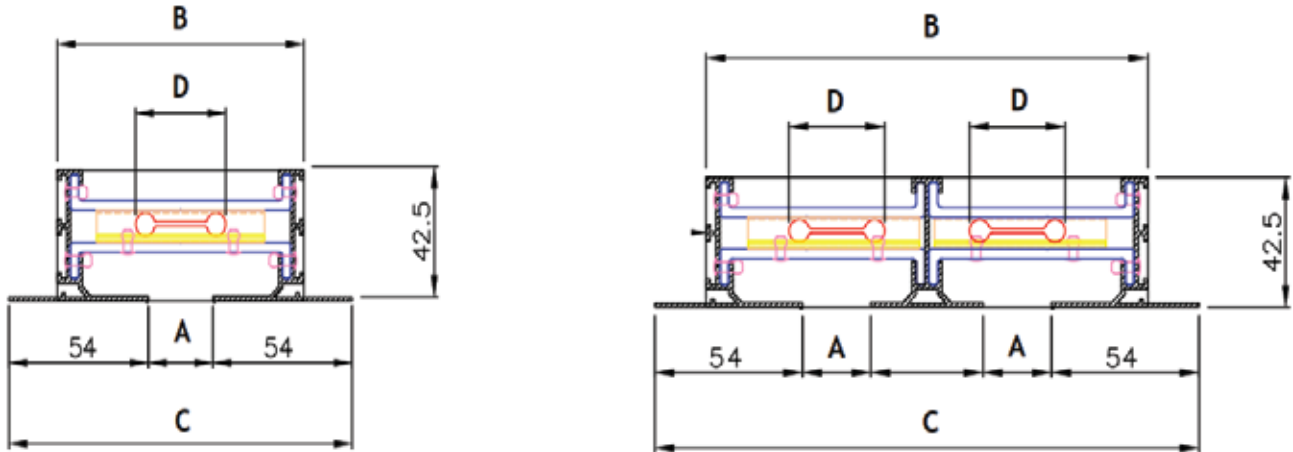




B) FLOW BAR DIFFUSER (FBF - Flush Type Flow Bar Diffuser) 54 mm Flange

Number Of Slots	1			2		
Slot Width, mm (A)	25	38	50	25	38	50
Neck Dimension, mm (B)	95	107	119	163	188	211
Face Dimension, mm (C)	133	146	158	201	223	249
Air Controller Bar (D)	35	35	54	35	35	54

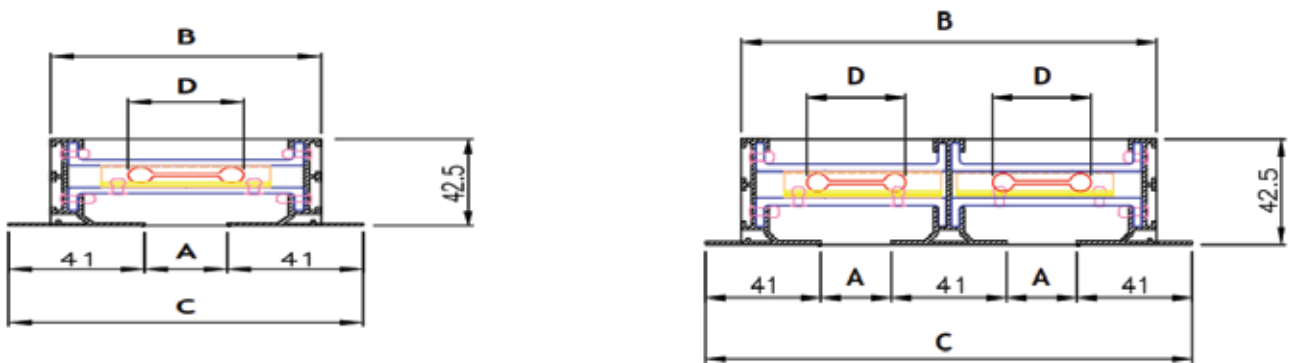
\* Above dimension with  $\pm 2$  mm tolerance.



C) FLOW BAR DIFFUSER (FBF - Flush Type Flow Bar Diffuser) 41 mm Flange

Number Of Slots	1			2		
Slot Width, mm (A)	25	38	50	25	38	50
Neck Dimension, mm (B)	82	95	107	148	173	198
Face Dimension, mm (C)	107	120	132	173	199	223
Air Controller Bar (D)	35	35	54	35	35	54

\* Above dimension with  $\pm 2$  mm tolerance.





Performance Data

25MM Slot	1- Slot	Airflow, cfm/ft.	25	40	55	70	85	100	115
		Static Pressure	0.028	0.072	0.136	0.221	0.325	0.450	0.596
		NC (Noise Criteria)	<10	16	26	33	39	44	49
		Throw	5-8-14	9-13-18	12-15-21	14-17-24	15-19-27	17-20-29	18-22-31
	2-Slot	Airflow, cfm/ft.	50	75	100	125	150	175	200
		Static Pressure	0.028	0.063	0.113	0.176	0.253	0.345	0.450
		NC (Noise Criteria)	<10	17	26	33	39	44	48
		Throw	7-11-20	11-17-25	15-20-29	19-23-32	20-25-35	22-27-38	23-29-41
38MM Slot	1- Slot	Airflow, cfm/ft.	30	45	60	75	90	105	120
		Static Pressure	0.032	0.073	0.130	0.203	0.292	0.398	0.520
		NC (Noise Criteria)	<10	14	24	31	37	42	48
		Throw	6-10-16	10-14-19	13-16-22	14-18-25	16-19-27	17-21-29	18-22-32
	2-Slot	Airflow, cfm/ft.	60	85	110	135	160	185	210
		Static Pressure	0.032	0.065	0.109	0.164	0.231	0.309	0.398
		NC (Noise Criteria)	<10	16	24	31	36	41	45
		Throw	9-14-22	13-19-27	17-21-30	19-24-33	21-26-36	23-28-39	24-29-42
50MM Slot	1- Slot	Airflow, cfm/ft.	30	50	70	90	110	130	150
		Static Pressure	0.020	0.057	0.111	0.184	0.274	0.383	0.510
		NC (Noise Criteria)	<10	11	22	30	36	41	46
		Throw	5-9-16	9-14-20	13-17-24	16-19-27	17-21-30	19-23-33	20-25-35
	2-Slot	Airflow, cfm/ft.	60	95	130	165	200	235	270
		Static Pressure	0.020	0.051	0.096	0.154	0.227	0.313	0.413
		NC (Noise Criteria)	<10	12	22	30	36	41	46
		Throw	7-12-22	13-19-28	17-23-33	21-26-37	23-29-41	25-31-44	27-33-47

- All pressures are in inches of water.
- Throw data based on active sections 4 feet long.
- Data obtained from tests conducted in accordance with ASHRAE Standard 2006-70 "Method of Testing for Rating the Performance of Air Outlets and Inlets"
- Isothermal throw values given are for terminal velocities of 100, 150 and 50 fpm
- Throw values for HighThrow units are based on a one-way discharge from the slot.

• Throw Correction Multiplier for length : 

Length, Feet	2	4	8	10	12
Throw Correction	0.72	0	1.5	1.7	1.8

Ordering Key:

F	B	R/F	I	/	25
FBF - Flush Type Flow Bar Diffuser FBR - Recessed Type Flow Bar Diffuser					
1 - 1 Slot 2 - 2 Slots					
25 - 25mm Slot Width 38 - 38mm Slot Width 50 - 50mm Slot Width					





**NOTES :**

A series of horizontal dashed red lines for taking notes.







**NOTES :**

A series of horizontal dashed red lines for taking notes.





**NOTES :**

A series of horizontal dashed red lines providing space for notes.







**BETA**  
i n d u s t r i a l

Dubai Head Office:  
Tel: +971 4 706 9777  
Fax: +971 4 706 9787

Abu Dhabi Branch:  
Tel: +971 2 645 0107  
Fax: +971 2 645 0167

Saudi Arabia:  
Tel: +966 1 265 4551  
Fax: +966 1 265 4550

Email: [betai@betag.com](mailto:betai@betag.com)  
P.O.Box 50708, Dubai  
United Arab Emirates

[www.betag.com](http://www.betag.com)

